

ARCHEOLOGIA E CALCOLATORI

35.2

2024

All'Insegna del Giglio

ARCHEOLOGIA E CALCOLATORI



CNR – DIPARTIMENTO SCIENZE UMANE E SOCIALI, PATRIMONIO CULTURALE

ISTITUTO DI SCIENZE DEL PATRIMONIO CULTURALE

Rivista annuale open access e peer reviewed
fondata da Mauro Cristofani e Riccardo Francovich
già diretta da Paola Moscati (1990-2022)

Comitato Scientifico: Paola Moscati (coordinatore), Giovanni Azzena, Robin B. Boast, Julian Bogdani, Rodolfo Brancato, Francisco Burillo Mozota, Francesca Buscemi, Alessandra Caravale, Christopher Carr, Martin O.H. Carver, Enrico Crema, Francesco D'Andria, Alessandro Di Ludovico, François Djindjian, James E. Doran, José Antonio Esquivel Guerrero, Virginie Fromageot-Laniepce, Simone Garagnani, Andrea Gaucci, Antonio Gottarelli, Maria Pia Guermandi, Anne-Marie Guimier-Sorbets, Ian Hodder, F. Roy Hodson, Stephen Kay, Donna C. Kurtz, Emma Lazzeri, Daniele Manacorda, Costanza Miliani, Tito Orlandi, Clive R. Orton, Maria Cecilia Parra, Alessandra Piergrossi, Alban-Brice Pimpaud, Jonathan Prag, Xavier Rodier, Francesco Roncalli di Montorio, Bernardo Rondelli, Irene Rossi, Grazia Semeraro, Paolo Sommella, Gianluca Tagliamonte, Marco Valenti, Marc Vander Linden, Valeria Vitale

Direttore responsabile: Alessandra Caravale

Redazione ed Editing: Claudio Barchesi, Letizia Ceccarelli, Antonio D'Eredità, Andrea Di Renzoni, Giulia Facchin, Giacomo Mancuso, Erika Tedino

Policy and Guidelines: <http://www.archcalc.cnr.it/pages/guidelines.php>

Autorizzazione del presidente del Tribunale di Firenze n. 3894 del 6/11/1989

Indirizzo Redazione: Rivista «Archeologia e Calcolatori», CNR – ISPC, Area della Ricerca di Roma 1, Via Salaria Km 29,300, 00015 Monterotondo Stazione (RM)
Tel. +39.06.90672670 – Fax +39.06.90672818
E-mail: redazioneac.ispc@ispc.cnr.it
<http://www.archcalc.cnr.it/>

Edizione e distribuzione: Edizioni ALL'INSEGNA DEL GIGLIO s.a.s.,
Via Arrigo Boito 50-52, 50019 Sesto Fiorentino (FI)
Tel. +39.055.6142675
E-mail: redazione@insegnadelgiglio.it – ordini@insegnadelgiglio.it
<https://www.insegnadelgiglio.it/>

ARCHEOLOGIA E CALCOLATORI

35.2

2024

All'Insegna del Giglio



H²IOSC

Humanities and cultural Heritage Italian Open Science Cloud

The publication of this journal's issue was funded by H2IOSC Project - Humanities and cultural Heritage Italian Open Science Cloud funded by the European Union NextGenerationEU - National Recovery and Resilience Plan (NRRP) - Mission 4 "Education and Research" Component 2 "From research to business" Investment 3.1 "Fund for the realization of an integrated system of research and innovation infrastructures" Action 3.1.1 "Creation of new research infrastructures strengthening of existing ones and their networking for Scientific Excellence under Horizon Europe" - Project code IR0000029 - CUP B63C22000730005. Implementing Entity CNR.

Realizzazione grafica della sovracoperta di Marcello Bellisario
Rivista «Archeologia e Calcolatori» (ISSN 1120-6861, e-ISSN 2385-1953)
ISBN 978-88-9285-298-3, e-ISBN 978-88-9285-299-0
© 2024 – All’Insegna del Giglio s.a.s. – www.insegnadelgiglio.it
Sesto Fiorentino (FI), dicembre 2024
Stampa, BDprint

Abbonamento 2024: 2 volumi, 34.1 e 34.2, € 96,00.
Spedizione: Italia, gratuita; estero, a carico del destinatario.
<https://www.insegnadelgiglio.it/categoria-prodotto/abbonamenti/>

INDICE

ARCHEOFOSS 2023. PROCEEDINGS OF THE 17 TH INTERNATIONAL CONFERENCE ON OPEN SOFTWARE, HARDWARE, PROCESSES, DATA AND FORMATS IN ARCHAEOLOGICAL RESEARCH (TURIN, 12-13 DECEMBER 2023), edited by ANNA MARIA MARRAS, ALESSIO PALMISANO, ROSINA LEONE, VITO MESSINA	
ANNA MARIA MARRAS, ALESSIO PALMISANO, ROSINA LEONE, VITO MESSINA, <i>Introduction</i>	11
ANNA MARIA MARRAS, <i>Foreword. Open Source, Open Science and communities in archaeology</i>	15
PIERGIOVANNA GROSSI, SERGE PLATA, <i>Amplifying archaeological outreach: the impact of Wikipedia and collaborative initiatives on cultural tourism</i>	19
VALERIA ACCONCIA, VALERIA BOI, ANNALISA FALCONE, ILARIA DI COCCO, MIRELLA SERLORENZI, <i>Dati aperti in archeologia: una riflessione sullo stato dell'arte nell'ambito del Ministero della Cultura</i>	29
STEFANO COSTA, ELEONORA FORNELLI, ANNA LORENZATTO, GENNARO IOVINO, CHIARA PANELLI, FIORENZA PROTO, RENATA ESPOSITO, <i>The DSC authority file: a link between fieldwork and finds</i>	39
ZACHARY BATIST, <i>Does not compute! Accounting for social and situated experiences while integrating and analyzing obsidian sourcing data</i>	47
LUCIA MARSICANO, MARCO MONTANARI, <i>Entertainment buildings in the Roman empire: a quantitative approach</i>	55
FLORIAN THIERY, ALLARD W. MEES, <i>Sharing Linked Open Data with domain-specific data-driven community hubs – archaeology.link in NFDI4Objects</i>	63
ALESSIO PALMISANO, ANDREA TITOLO, <i>The good, the bad and the ugly: evaluating Open Science practices in archaeology</i>	75
VITTORIO LAURO, <i>Harmonizing photogrammetric approaches for Cultural Heritage preservation: a methodological framework and comparative analysis</i>	85
FLORIAN THIERY, FIONA SCHENK, STEFANIE BAARS, <i>Dealing with doubts: site georeferencing in archaeology and in the geosciences</i>	97
ANDREA TITOLO, ALESSIO PALMISANO, <i>Using Kart and GitHub for versioning and collaborating with spatial data in archaeological research</i>	107
FEDERICA VACATELLO, ANDREA VANNINI, <i>'Open' architecture of UAVIMALS prototype and its archaeological use</i>	119

AUGUSTO PALOMBINI, <i>Metaverse and 'the Italian job': closed and open models of virtual worlds in Cultural Heritage domain</i>	129
DIOGO MENEZES COSTA, <i>The Abade Artificial Archaeological Site Project</i>	137
PABLO SICRE-GONZÁLEZ, JOSÉ ORTIZ-GARCÍA, <i>Virtual recreation as a valid scientific representation for raising public awareness</i>	147
ANTONIO RODRÍGUEZ ALCALÁ, JOHN F. CHUCHIAK IV, ZORAIDA RAIMÚNDEZ ARES, MARIA FELICIA REGA, LUIS DÍAZ DE LEÓN, HANS B. ERICKSON, <i>An open look to the past: virtual and immersive approach to study inquisitorial Autos de Fe in colonial Mexico and Guatemala</i>	157
SIMONE BERTO, EMANUEL DEMETRESCU, ENZO COCCA, <i>Extended Matrix Manager: an open tool for EM based knowledge graphs management</i>	167
PAOLA FRIGERIO, CATERINA PREVIATO, EMANUEL DEMETRESCU, <i>Extended Matrix Narratives: teaching and engaging through the past</i>	177
SARA FABBRI, <i>Reviving the past: utilizing the Extended Matrix tool for Deacon Thomas Dayr virtual reconstruction</i>	187
LORENZO GIGLI, MARCO MONTANARI, LUCIA MARSICANO, <i>Engaging the public: reviving history through the Social Simulacra model in participatory Public History projects</i>	197
LUCA BEZZI, ALESSANDRO BEZZI, RUPERT GIETL, CICERO MORAES, GIUSEPPE NAPONIELLO, SARA AIRÒ, ANDREAS PUTZER, ELENA SILVESTRI, <i>Digital twins of archaeological finds: open source technologies applied to 3D scanning</i>	203
EMANUELA FARESin, VANESSA BARATELLA, MARGARITA GLEBA, <i>Non-invasive methodologies for the study of mineralised textile traces in Iron Age contexts</i>	215
FILIPPO DIARA, <i>Data extraction from 3D scanning: post-processing filtering for analytic and informative models of small archaeological finds</i>	225
DANIELE BURSICH, <i>Scansioni 3D di piccoli reperti per il progetto ArCOA (Archivi e Collezioni dell'Oriente Antico)</i>	235
ELEONORA IACOPINI, <i>Zotero2Map: sviluppo di un nuovo strumento ITC per la condivisione e la pubblicazione dei dati bibliografici per la ricerca storica e archeologica</i>	245
MARCO MONTANARI, LUCIA MARSICANO, <i>Simplifying contextualization of 3D model archives in webGIS: 3DModelCommons</i>	255
ELENA MARANGONI, ORIANA BOZZARELLI, <i>I progetti Wikimedia e gli enti culturali</i>	263

LINKING PASTS AND SHARING KNOWLEDGE. MAPPING ARCHAEOLOGICAL HERITAGE, LEGACY DATA INTEGRATION AND WEB TECHNOLOGIES FOR MODELLING HISTORICAL LANDSCAPES (NAPLES, 13 TH -14 TH NOVEMBER 2023), edited by RODOLFO BRANCATO, JULIAN BOGDANI, VALERIA VITALE	
JULIAN BOGDANI, RODOLFO BRANCATO, VALERIA VITALE, <i>Introduction</i>	275
MARGHERITA AZZARI, PAOLO LIVERANI, <i>Landscape visualisation and modelling</i>	277
MIRELLA SERLORENZI, ASCANIO D'ANDREA, CARLO ROSA, PAOLO ROSATI, DANIELE SEPIO, <i>Preliminary results of the archaeological potential map in SITAR</i>	285
GIUSEPPINA RENDA, CARMINE CIVALE, SABRINA MATALUNA, PACIFICO COFRANCESCO, <i>The GISTArc webGIS for the accessibility and sharing of archaeological data in Campania</i>	299
VALENTINA LIMINA, <i>Challenges and benefits in modelling ancient landscapes complexity through resilience and antifragility. RELOAD: a project on liminality in Northern Tuscany</i>	311
JULIAN BOGDANI, DOMIZIA D'ERASMO, <i>Old data, old methodology and new research. A case study of legacy data integration from the Cestrine Region, Epirus</i>	323
JACOPO TURCHETTO, ELISA CONSOLO, GIACOMO MORO, <i>Mapping the archaeological landscapes of San Basilio (Ariano nel Polesine, Rovigo)</i>	333
BARBARA E. BORG, ELEONORA IACOPINI, <i>IN-ROME – The INscribed city: urban structures and interaction in imperial Rome</i>	343
VALERIA VITALE, KATHERINE McDONOUGH, <i>Labels and symbols: using text on maps to investigate the antiquities on the ordnance survey maps of Great Britain</i>	355
NICOLA LANERI, CHIARA PAPPALARDO, MARIANNA NICOLOSI-ASMUNDO, DANIELE FRANCESCO SANTAMARIA, <i>Godscapes: towards a model of material religion in the second millennium BCE Levant via Semantic Web ontologies</i>	363
SERGIO G. RUSSO, <i>Geostatistical mapping of pottery variation: the northern lands of western Asia during the Middle Bronze Age</i>	371
ANDREA D'ANDREA, <i>Legacy data or just archaeological data?</i>	381
RODOLFO BRANCATO, VERONICA FERRARI, IMMACOLATA DITARANTO, PASQUALE MEROLA, IRENE ROSSI, <i>Investigating resilient Roman agricultural landscapes in southern Italy. An integrated and open IT approach to modeling centuriation</i>	387
LAURA EBANISTA, <i>Use and processing of multispectral images in proximity remote sensing</i>	401

CLAUDIA LAMANNA, <i>Evaluation of SfM and LiDAR technology for mapping inscribed artifacts. Preliminary observations starting from the research project 'Ravenna and its Late Antique and Medieval Epigraphic Landscape'</i>	411
DANIELE DE SIMONE, GRAZIANO WILLIAM FERRARI, <i>3D LiDAR modeling with iPhone Pro in an archaeo-splaeologic context. Results and prospects</i>	421
GIUSEPPE LUONGO, <i>GIS integration of heterogeneous data for the archaeological topography of the 'Acquedotto del Paradiso', Syracuse</i>	431
GIULIA MARSILI, <i>Digital strategies for enhancing Cultural Heritage: the Villa del Casale of Piazza Armerina Project, from legacy data to digital ecosystem</i>	445
PAOLA MOSCATI, <i>Concluding remarks: looking back and moving forward to the openness and interaction of knowledge</i>	455

*
* * *

THE H2IOSC PROJECT AND ITS IMPACT ON DIGITAL ANTIQUITY WITHIN THE E-RIHS INFRASTRUCTURE – II, SPECIAL SECTION EDITED BY ALESSANDRA CARVALE, PAOLA MOSCATI, IRENE ROSSI

ALESSANDRA CARVALE, PAOLA MOSCATI, IRENE ROSSI, <i>Advancements of the H2IOSC Project: enhancement of digital resources in the Cultural Heritage field targeting archaeology and epigraphy. Introduction to the Special section</i>	463
NICOLÒ PARACIANI, <i>A new website for the journal «Archeologia e Calcolatori»</i>	471
FRANCESCA BUSCEMI, LEONARDA FAZIO, <i>Verso la costituzione di linee guida per l'esposizione di risorse visuali negli aggregatori europei</i>	483
IRENE ROSSI, CHIARA SALVADOR, <i>An observatory of epigraphic resources on the web: the Open Digital Epigraphy Hub</i>	503

Recensioni:

D. MANACORDA, *Triangolo virtuoso. Tre parole chiave per l'archeologia* (Giulia Facchin), p. 525; M. DANESE, N. MASINI, M. BISCIONE, *Gli Open Data per il patrimonio culturale: aspetti teorici ed esperienze in Italia* (Giacomo Mancuso), p. 528

LINKING PASTS AND SHARING KNOWLEDGE.
MAPPING ARCHAEOLOGICAL HERITAGE,
LEGACY DATA INTEGRATION
AND WEB TECHNOLOGIES
FOR MODELLING HISTORICAL LANDSCAPES
(NAPLES, 13TH-14TH NOVEMBER 2023)

Edited by

Rodolfo Brancato, Julian Bogdani, Valeria Vitale

The publication of the section dedicated to the Proceedings of the international Conference *Linking Pasts and Sharing Knowledge. Mapping Archaeological Heritage, Legacy Data Integration and Web Technologies for Modelling Historical Landscapes*, Naples, 13th-14th November 2023 was made possible thanks to the support of Dipartimento di Studi Umanistici-Università di Napoli Federico II (PRIN 2022 In.Res.Agri, Project Code 2022SMJCHX, CUP: B53D23001910006) and Sapienza Università di Roma.

IN-ROME – THE INSCRIBED CITY: URBAN STRUCTURES AND INTERACTION IN IMPERIAL ROME

*Cities are not just a sum of buildings, but especially a set
of social relations that their inhabitants develop*

ALMUSAED, ALMSSAD 2020

1. INTRODUCTION

The exceptionality of the city of Rome in terms of its size is hard to overestimate. Its population is variously estimated at between 750,000 and 1 million around the time of Augustus when it had long outgrown its 4th c. city walls ('Servian Wall'; cf. e.g. WILSON 2011; DE LIGT 2012; HANSON 2016). Already Dionysius of Halicarnassus (IV, 13, 3-5; 1st c. BCE) famously observed that it was impossible to tell where the city actually ended. Such a large city and its immediate surroundings were obviously structured in some way. Various boundaries, reinforced by rituals and sacred law, were important to the city's identity. Its more densely inhabited area was divided into 14 regions and 265 *vici* (neighbourhoods) while the surrounding area was organised in *pagi* (districts). Beyond key infrastructure and public buildings, the degree of urban planning is considered to have been quite low, and regions, *vici* and *pagi* primarily served administrative and census purposes (LOTT 2004, 2013; TARPIN 2003; WALLACE-HADRILL 2008). Yet they also had their representatives and shrines acting as foci of local identity and neighbourhood support (FLOWER 2017; GOODMAN 2020). Some *vici* were named after businesses that clustered there: carpenters, harness-makers, ironworkers, perfumers, etc. (TARPIN 2003; HASELBERGER 2007; HOLLERAN 2012; GOODMAN 2016; regions: PALOMBI 1999).

Empirical research has shown that self-organising mechanisms exist even where no state authority engages in active urban planning (WALLACE-HADRILL 2008; self-organising: ALLEN, SANGLIER 1981; ALLEN 1997; OPALACH 1997; THRIFT 1999; and much discussed recently, e.g. RAUWS *et al.* 2016; MORONI *et al.* 2020. For the clustering of traders and craftsmen in the modern and ancient world, see GOODMAN 2016, with bibl.; organising principles behind seemingly maze-like urban layouts e.g. in Islamic cities: KOSTOF 1991). The natural environment also impacts on the use of land. Even though literary sources talk rarely about Rome's peri-urban areas, we can still expect that the space outside the inner city be structured in various ways, even if not necessarily along administrative boundaries.

Yet despite the recent surge in urban studies of the ancient world, our understanding of these structures is still limited. Besides thousands of

publications on individual structures and excavations, some areas have received a more holistic treatment (e.g. CIMA, LA ROCCA 1998; LIVERANI 2003; MANACORDA, SANTANGELI VALENZANI 2010; ALBERS 2013; JACOBS, CONLIN 2015; MIGNONE 2016; on the city centre esp. numerous publications by D. Palombi), but work covering the entire project area is either limited chronologically (HASELBERGER 2002, 2007; the *Digital Augustan Rome* project: <https://www.digitalaugustanrome.org>), disjointed due to its lexicon format (STEINBY 1993-2006), or focused on monumental buildings (HASELBERGER 2002, 2007; CARANDINI, CARAFA, CAMPBELL HALAVAIS 2017).

Several important, large-scale, long-term projects are currently underway in Rome that aim at a fuller documentation of the archaeological remains both within and outside the Aurelian Walls¹. Yet so far, they focus on documentation rather than analysis and do not systematically integrate inscriptions. Considering that the built environment in any city both shapes and is being shaped by the everyday lives of those inhabiting and using it, we are missing out on some crucial evidence for understanding how Rome's society worked (e.g. LAURENCE 1994; KAISER 2000; LAURENCE, NEWSOME 2011; STÖGER 2011; HAUG, KREUZ 2016: all address Rome in passing at best).

'IN-ROME – The INscribed city: urban structures and interaction in imperial ROME' (<https://inrome.sns.it/>) aims to fill this gap. It will offer the first holistic description and analysis of the urban development and use of space of the Roman territory outside the Servian Wall and within of c. 13 km surrounding it (the area covered by the *Corpus Inscriptionum Latinarum*, CIL VI) from the late Republic to the 3rd c. CE. The timeframe is suggested by the start of an extensive epigraphic habit in the 1st c. BCE and the end of the 3rd c. CE, after which the huge corpus of Christian inscriptions, collected separately in ICUR and the Epigraphic Database Bari (EDB: <https://www.edb.uniba.it>), would need to be included in any historical enquiry, which is impossible to deliver in this project. Bridging the divide between research on the area within and outside of the 3rd c. Aurelian Wall, it will illustrate how different parts of the population (ethnicities, status groups, families, genders) and their activities map onto the city's surroundings via military stations, association seats, sanctuaries, production sites, mines, agriculture, markets

¹ Esp. the webGIS system 'SITAR', provided fully open access by the Soprintendenza Speciale di Roma. Archeologia, Belle Arti e Paesaggio, with M. Serlorenzi as responsible, which is continuously updated with new excavation results: https://repositor.archeositarproject.it/ui/map?_cx=1389755.7486645882&_cy=5144621.911151068&_xz=14.500000000000002; 'Forma Romae?' by the Sovrintendenza Capitolina ai Beni Culturali: <https://formaromae.comune.roma.it/content/home>; 'The Roman Hinterland Project': <https://www.universiteitleiden.nl/en/research/research-projects/archaeology/the-rome-hinterland-project> and 'Lazio Antico', both co-directed by P. Carafa and M.T. D'Alessio; Atlante Dinamico di Roma e della sua Area Metropolitana directed by A. Pugliano: <https://actus.uniroma3.it>. We are enormously grateful to the projects Principal Investigators for their willingness to collaborate with IN-ROME.

and shops, baths, guesthouses, tombs and villas. The aim of this synthesis is not a more comprehensive description of an archaeological landscape than has been published to date. As noted above, this project is well under way. The project intends to infer from ‘topographical facts’ and the spatial distribution of activities, organising principles (intended or unintended) as well as the likely interactions and relationships between different sectors of society.

The underlying idea was tested in Borg’s project ‘Mapping the Social History of Rome: a topographical approach to action and interaction in an ancient mega-city’, funded by a three-year Leverhulme Major Research Fellowship, which serves as a proof-of-concept study for key aspects of IN-ROME. By exploring the varied, closely interconnected, and changing uses of land in a small, key area of Rome’s *suburbium*, it was aimed at reaching a better understanding of the changing activities and interactions between different social, economic, ethnic, and religious groups, not only in this area but in Roman society more generally. It was based on the observation that reconstructing the epigraphic profile of a specific area and comparing it with the archaeological record often allows us to identify the agency behind (some of) the activities attested by archaeology. More importantly, reconnecting agents with the locations of their activities makes visible relationships between members of different social groups that acted in close proximity to each other and may have interacted.

Regarding the relationship between different ethnic and religious groups, the research cuts through some seemingly unsolvable problems. Studying the important cult site for the apostles Peter and Paul underneath the present church of S. Sebastiano diachronically within its local context, it throws new light on the relationship between Christians and non-Christians during the first four centuries CE by demonstrating that the apostles’ cult developed there already from the earlier 2nd century onwards, and how it did so in the middle of a particularly busy part of the *suburbium* dominated by staff of the imperial household and members of élite military guards (cf. BORG 2019, 2022, 2024).

The Appia project has inspired the application of the ‘mapping social history’ approach to the wider area of Rome and its *suburbium* and has also demonstrated that inscriptions are an indispensable source of information for this approach. Yet the *Corpus Inscriptionum Latinarum* (CIL VI), the main corpus of Latin inscriptions from Rome, and the databases based on it, typically record the provenance of inscriptions with reference to historical toponyms and names of estate owners, which are often difficult to locate. The recontextualization of inscriptions is therefore a time-consuming activity even for a small area, and impossible to achieve for the entire research area. A key component of IN-ROME is therefore the development of a tool through which it is possible to re-locate larger numbers of inscriptions or assembling

the full record of inscriptions from a specific area with a mouse click. To achieve this, we have taken the following steps.

2. ENHANCING THE EDR DATABASE AND LINKING ALL INSCRIPTIONS WITH PROVENANCE TO A WEBGIS SYSTEM

Under the leadership of Silvia Orlandi, Chantal Gabrielli is significantly enhancing the 'Epigraphic Database Roma' (EDR: <http://www.edr-edr.it/default/index.php?lang=en>) by including large numbers of inscriptions from *CIL* VI with a known find spot or likely provenance, resulting in a total of c. 40-50,000 inscriptions. These will include, for the first time, lost inscriptions only known from manuscripts, all inscriptions referring to religious cults, all inscriptions referring to occupations, trade and commerce, and a large number of epitaphs that, on their own, do not provide any significant information to the historian, and which have therefore not been prioritised in previous work on the database. The database will distinguish clearly between secure and likely find spots and locations highly likely to be secondary contexts.

3. CREATING A WEBGIS MAP AND GAZETTEER DATABASE OF HISTORIC TOPONYMS

The primary locations identified in EDR will be linked to a Gazetteer Database, allowing them to be related to topographical, archaeological, geological, and other maps. The chosen map base is the Catasto Gregoriano dell'Agro Romano. The digitised map sheets of the Catasto and the *brogliardi* (land registers), which have been scanned through project funds, are already available on the Archivio di Stato's IMAGO website (https://imagoarchivio.distatoroma.cultura.gov.it/agro/sfoglia_agro.php?Path=Agro&r=&lar=1707&alt=960). Geo-referenced versions of the map sheets will be stored in GeoTIFF format on Zenodo. Created between 1816 and 1835 in the wake of a papal census, the Catasto consists of maps (scale: 1:2000; Fig. 1) and land registers (*brogliardi*, Fig. 2) of the Agro Romano of unprecedented detail and precision but still reflecting the situation before the building booms of the later 19th and 20th centuries. The property parcels are often easy to identify in later maps and even in Google Earth today, thus allowing for the Gazetteer Database to be enhanced by property owner names and toponyms found in earlier maps, in the cadastre's later updates, and in the maps of the Istituto Geografico Militare (IGM). Descriptions in the *brogliardi* of the character and use of land at the time aid the reconstruction of the agricultural potential of the landscape (studied by Antonio Campus).

During the first project year, priority objectives included the creation of the gazetteer and the geolocation of inscriptions in EDR, by cross-referencing



Fig. 1 – Mapsheet AGRO-161 of the Catasto Gregoriano dell’Agro Romano showing «Vigne poste fuori le Porte di San Sebastiano, Latina e San Giovanni con le tenute di Caffarella ed Arcotravertino».

the information about the place of discovery with a toponymic database. These needs were the basis for building the relational logic of the web-based database, for which open-source technologies were used, integrating rich functionalities with user-friendly interfaces to achieve both objectives. Michael Seidl and Michela Vignoli from the Austrian Institute of Technology experimented with automated methods of vectorising the ca. 75 maps of the project area. Yet, among other issues, the algorithms have not been able to distinguish sufficiently well between relevant lines such as parcel boundaries

national and international research projects (BOGDANI 2019, 2024). Specifically, LAD handles the design and implementation of the IT infrastructure, managing both the server and client sides.

A production server was implemented for the project using a system of applications managed through Docker, which allows applications and their dependencies to be isolated within virtualized environments called containers. The implementation of Directus as a database management system and the use of PostgreSQL/PostGIS as a database represents a solid choice for the server side of the system. Directus is an open-source system that provides an intuitive and flexible interface for managing database data, allowing for easy definition of data structures, content management, and user access permissions. Additionally, Directus offers advanced features such as file management, custom workflows, and integration with other services and APIs (Application Program Interfaces). Meanwhile, using PostgreSQL with the PostGIS extension adds geospatial capabilities to the system, enabling efficient management and analysis of geographic data. This combination of technologies provides an excellent foundation for the development and management of a complex system (IACOPINI 2024a) as described in the context of the IN-ROME project, enabling effective and efficient implementation of the required functionalities for georeferencing inscriptions and managing epigraphic and geospatial data.

Currently, the database contains several tables related to the gazetteer, website management, and the toponymic database. Regarding the Catasto Gregoriano, the database includes both the data from the *brogliardi* and the associated geometric primitives. For storing informational data, three interconnected tables have been created. The first table pertains to the storage of maps, containing an identification field, a title (e.g., ‘Agro Romano Suburbano di Roma Porzione di mappa n. 1’), and the date of edition. Each map is linked to many parcels that make up the single map. The parcels are documented through various informational fields related to different aspects such as parcel identification, whether it is a building or a piece of land, toponymic framework, land registers’s list, owners, land morphology, land use, and dimensions. In addition to containing data from the *brogliardi*, the database also allows for the management of the digitization of the geometric primitives of the Catasto, which are divided into polygons (for parcels and buildings), linear features (for roads and rivers), and points for toponymic data or points of interest. Likewise, the IGM map linked to *CIL* has been georeferenced, and around 1300 toponyms have been digitized.

Regarding the interaction between the toponymic database and the one related to EDR, successful verification tests have been conducted for cross-referencing the data and georeferencing the inscriptions based on the ‘Discovery location’ field. The connection to the EDR API is managed through specific flows (Fig. 3) that enable customized data processing, event-based

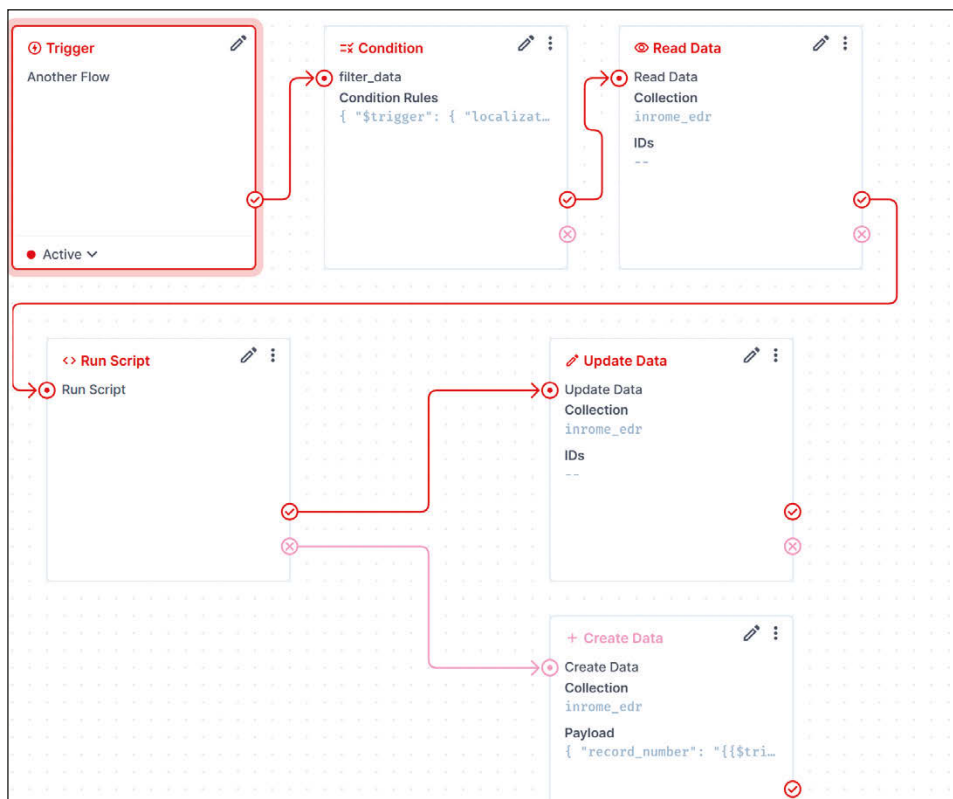


Fig. 3 – Directus Flow diagram, from EDR API to new database table.

actions, and task automation within Directus. The flow involves integrating the Webhook API with EDR, including pagination, filtering by city and discovery location, and finally creating a new table with the filtered results. Thanks to the intersection of epigraphic data containing a discovery indication (e.g., ‘Ruderi dell’Acquedotto Alessandrino’) and the toponymic database (IACOPINI 2024b), it was possible to create a map showing the original locations of the inscriptions. Each point on the map contains the inscriptions found at the same location, which can be viewed through a list displayed on the left side of the map (Fig. 4).

It is intended to archive the results in standard formats (CSV attribute tables and GeoJSON, compliant to the Linked Places profile) and to include them as a separate layer in the webGIS system SITAR, where it is joined they will be joined with archaeological, topographical, geological and other maps and published under CC-BY-NC-SA license.

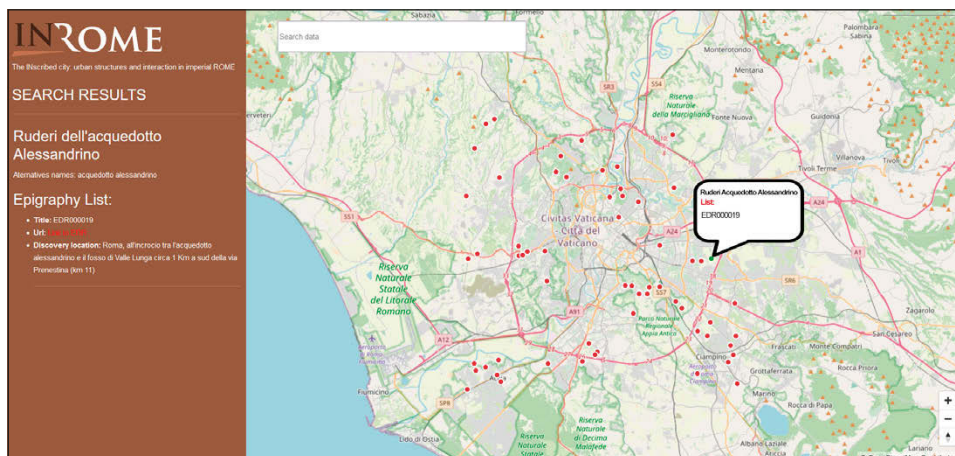


Fig. 4 – Map of inscriptions showing for each point the list of inscriptions found in the same location.

4. CONTRIBUTION OF THE NEW RESOURCES

The combined new resources of the enhanced EDR, the vectorised *Catasto Gregoriano dell'Agro Romano* and the *Gazetteer Database* will benefit both, the IN-ROME project and future research. Within the project, they will allow for queries originating in the map or gazetteer. For instance, starting from the map, we will be able to compile the epigraphic inventory and profile of a specific area. Or we will be able to map areas of a specific character or used in a specific way in the 18th c. contributing to the reconstruction of potential land use in antiquity. Starting from EDR, we will be able to apply all filters already available and map the results automatically. For instance, we will be able to map cult sites for specific divinities, evidence for people with a particular occupation, *collegia*, or specific *gentilicia* which could help us to better understand whether certain families dominated identifiable parts of Rome and its *suburbium*. It will be essential, in particular with regard to smaller data sets, to assess the value of any topographical patterns obtained. Umberto Soldovieri therefore addresses potential systematic biases in interpreting patterns emerging from inscription mapping due to external circumstances such as collection histories and uneven survival, documentation or exploration etc. and advises on the reliability of provenance descriptions.

This resource will be integrated with a PostgreSQL working database based on published and unpublished archaeological and archival materials and their interpretation that forms the basis of our topographical research and helps to contextualise the results of our automated mapping of inscriptions. It will consolidate the widest possible range of activities and their locations,

re-uniting information from 40-50,000 inscriptions with the archaeological evidence, the natural landscape and literary sources. Inscriptions will be mapped applying a wide range of filters, and interpreted in relation to topographical, archaeological, geological and environmental maps, and elevation models, thus visualising spatial structures and organisation.

Beyond the project, anyone applying a topographical approach to inscriptions from the area of *CIL VI* will benefit from the ease with which inscriptions will be mapped. In turn, individuals and institutions working with other kinds of archaeological materials (e.g. sculptures and other artefacts), whose provenance is likely indicated with the same reference to historic landowners and toponyms, will be able to link their objects to the GIS system and map them in this way.

BARBARA E. BORG

Scuola Normale Superiore di Pisa
barbara.borg@sns.it

ELEONORA IACOPINI

Sapienza Università di Roma
eleonora.iacopini@uniroma1.it

REFERENCES

- ALBERS J. 2013, *Campus Martius: die urbane Entwicklung des Marsfeldes von der Republik bis zur mittleren Kaiserzeit*, Wiesbaden, Reichert.
- ALLEN P.M. 1997, *Cities and Regions as Self-Organizing Systems: Models of Complexity*, Amsterdam, Gordon and Breach.
- ALLEN P.M., SANGLIER M. 1981, *Urban evolution, self-organization, and decision making*, «Environment and Planning A», 13, 167-183.
- ALMUSAED A., ALMSSAD A. 2020, *City phenomenon between urban structure and composition*, in A. ALMUSAED, A. ALMSSAD, L. TRUONG-HONG (eds.), *Sustainability in Urban Planning and Design*, London, IntechOpen, 1-29.
- BOGDANI J. 2019, *Paths: Sulla creazione di un geo-database aperto dedicato all'Egitto tardoantico e medievale*, «Archeologia e Calcolatori», 30, 471-474 (<https://doi.org/10.19282/ac.30.2019.32>).
- BOGDANI J. 2024, *Moveit: A proof of concept of a road graph for late antique Egypt*, «GROMA: Documenting Archaeology», 7, 14-25.
- BORG B.E. 2019, *Herodes Atticus in Rome: The triopion reconsidered*, in C.M. DRAYCOTT, R. RAJA, K. WELCH, W.T. WOOTTON (eds.), *Visual Histories of the Classical World. Essays in Honour of R.R.R. Smith*, Turnhout, Brepols, 317-330.
- BORG B.E. 2022, *Peter and Paul ad catacumbas: A pozzolana mine reconsidered*, in N. ZIMMERMANN, T. FRÖHLICH (eds.), *The Economy of Death: New Research on Collective Burial Spaces in Rome from the Late Republican to the Late Roman Period. Proceedings of the 19th International Congress of Classical Archaeology (Cologne/Bonn 2018)*, Heidelberg, Propylaeum, 45-58.
- BORG B.E. 2024, *The True Burial Site of Peter and Paul? Christians and Jews on the Appian Way*, Leiden, BABESCH Foundation.
- CARANDINI A., CARAFA P., CAMPBELL HALAVAIS A. 2017, *The Atlas of Ancient Rome*, Princeton, Princeton University Press.

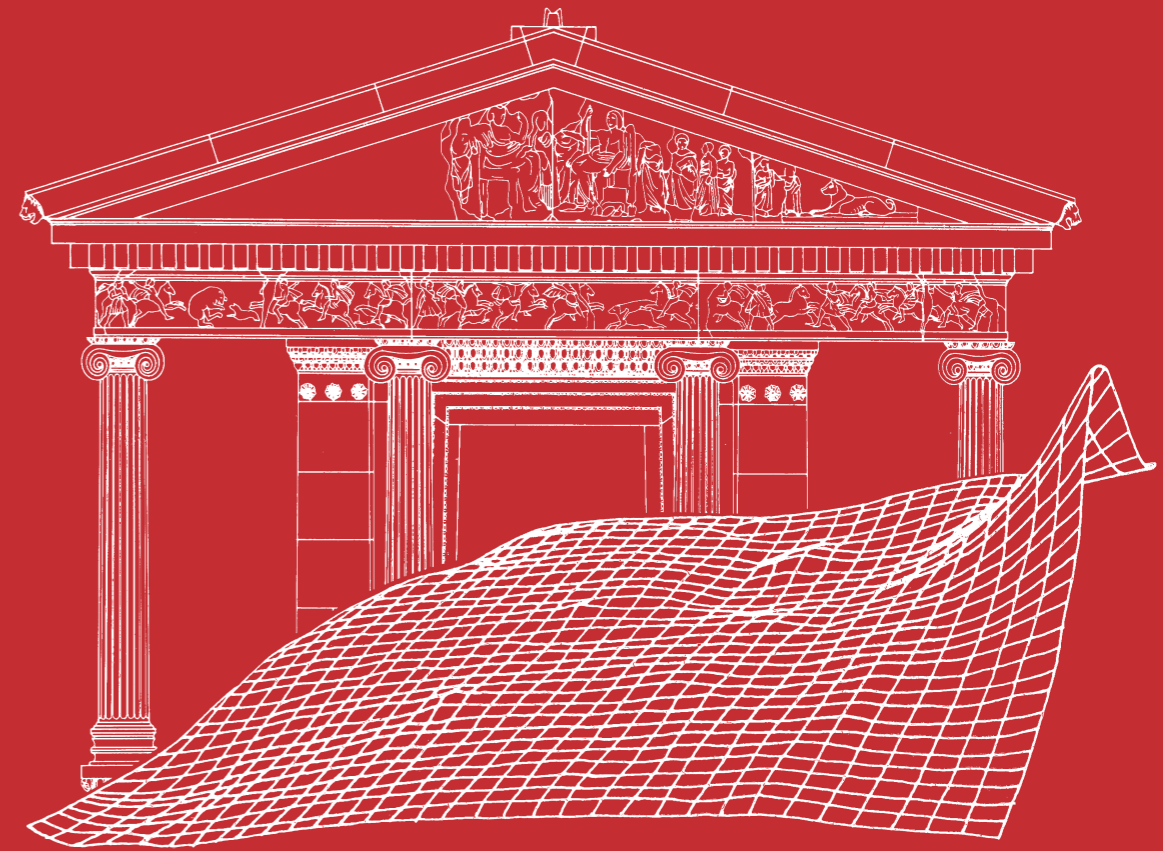
- CIMA M., LA ROCCA E. (eds.) 1998, *Horti Romani*, Roma, L'Erma di Bretschneider.
- FLOWER H.I. 2017, *The Dancing Lares and the Serpent in the Garden: Religion at the Roman Street Corner*, Princeton, Princeton University Press.
- GOODMAN P. 2016, *Working together: Clusters of artisans in the Roman city*, in A. WILSON, M. FLOHR (eds.), *Urban Craftsmen and Traders in the Roman World*, Oxford, Oxford University Press, 301-333.
- GOODMAN P.J. 2020, *In omnibus regionibus? The fourteen regions and the city of Rome*, «Papers of the British School at Rome», 88, 119-150.
- HANSON J.W. 2016, *An Urban Geography of the Roman World, 100 BC to AD 300*, Oxford, Archaeopress.
- HASELBERGER L. 2002, *Mapping Augustan Rome*, «Journal of Roman Archaeology», Supplement 50.
- HASELBERGER L. 2007, *Urbem Adornare: Die Stadt Rom und ihre Gestaltumwandlung unter Augustus / Rome's urban metamorphosis under Augustus*, «Journal of Roman Archaeology», Supplement 64.
- HAUG A., KREUZ P.-A. 2016, *Stadterfahrung als Sinneserfahrung in der römischen Kaiserzeit*, Turnhout, Brepols.
- HOLLERAN C. 2012, *Shopping in Ancient Rome: The Retail Trade in the Late Republic and the Principate*, Oxford, Oxford University Press.
- IACOPINI E. 2024a, *The archaeological map of Ancona: New IT tools*, «GROMA: Documenting Archaeology», 7.
- IACOPINI E. 2024b, *Zotero2map: sviluppo di un nuovo strumento ITC per la condivisione e la pubblicazione dei dati bibliografici per la ricerca storica e archeologica*, «Archeologia e Calcolatori», 35.2, 245-254 (<https://doi.org/10.19282/ac.35.2.2024.26>).
- JACOBS P.W., CONLIN D.A. 2015, *Campus Martius: The Field of Mars in the Life of Ancient Rome*, Cambridge, Cambridge University Press.
- KAISER A. 2000, *The Urban Dialogue: An Analysis of the Use of Space in the Roman City of Empúries, Spain*, Oxford, Archaeopress.
- KOSTOF S. 1991, *The City Shaped: Urban Patterns and Meanings through History*, London, Thames & Hudson.
- LAURENCE R. 1994, *Roman Pompeii: Space and Society*, London, Routledge.
- LAURENCE R., NEWSOME D.J. (eds.) 2011, *Rome, Ostia, Pompeii: Movement and Space*, Oxford, Oxford University Press.
- DE LIGT L. 2012, *Peasants, Citizens and Soldiers: Studies in the Demographic History of Roman Italy 225 BC-AD 100*, Cambridge, Cambridge University Press.
- LIVERANI P. 2003, *L'agro Vaticano*, in P. PERGOLA, R. SANTANGELI VALENZANI, R. VOLPE (eds.), *Suburbium. Il suburbio di Roma dalla crisi del sistema delle ville a Gregorio Magno*, Rome, École Française de Rome, 399-413.
- LOTT J.B. 2004, *The Neighborhoods of Augustan Rome*, Cambridge, Cambridge University Press.
- LOTT J.B. 2013, *Regions and neighbourhoods*, in P. ERDKAMP (ed.), *The Cambridge Companion to Ancient Rome*, Cambridge, Cambridge University Press, 169-189.
- MANACORDA D., SANTANGELI VALENZANI R. (eds.) 2010, *Il primo miglio della Via Appia a Roma. Atti della giornata di studio (Roma 2009)*, Roma, Università degli Studi Roma Tre Press.
- MIGNONE L.M. 2016, *The Republican Aventine and Rome's Social Order*, Ann Arbor, University of Michigan Press.
- MORONI S., RAUWS W., COZZOLINO S. 2020, *Forms of self-organization: Urban complexity and planning implications*, «Environment and Planning B: Urban Analytics and City Science», 47, 28-303 (<https://doi.org/10.1177/2399808319857721>).
- OPALACH B. 1997, *Political space: The architecture of squatter settlements in São Paulo, Brazil*, «Traditional Dwellings and Settlements Review», 9, 35-50.

- PALOMBI D. 1999, *Regiones quattuordecim*, in STEINBY 1993-2006, 4, 199-204.
- RAUWS W., DE ROO G., ZHANG S. 2016, *Self-organisation and spatial planning: An editorial introduction*, «Town Planning Review», 87, 241-251.
- STEINBY E.M. 1993-2006, *Lexicon topographicum urbis Romae*, Roma, Quasar.
- STÖGER H. 2011, *Rethinking Ostia: A Spatial Enquiry into the Urban Society of Rome's Imperial Port-Town*, Leiden, Leiden University Press.
- TARPIN M. 2003, *Vici et pagi dans l'Occident romain*, Rome, École française de Rome.
- THRIFT N. 1999, *The place of complexity*, «Theory, Culture & Society», 16, 31-69.
- WALLACE-HADRILL A. 2008, *Rome's Cultural Revolution*, Cambridge/New York, Cambridge University Press.
- WILSON A. 2011, *City sizes and urbanization in the Roman empire*, in A.K. BOWMAN, A. WILSON (eds.), *Oxford Studies on the Roman Economy*, Oxford, Oxford University Press, 161-196.

ABSTRACT

This paper describes the objectives and methodological approaches of the project 'IN-ROME – The INscribed city: urban structures and interaction in imperial ROME'. The project aims at mapping as comprehensively as possible a wide range of activities that shaped both the physical environment and the relationships between its inhabitants. Focussing on the time period between the 1st century BCE and the 3rd century CE, and on the area outside the 4th century BCE 'Servian' Walls up to about the 9th mile of Rome's consular roads, it draws on archaeological, literary and archival sources. In addition, and crucially, it aims to virtually re-contextualise c. 50,000 inscriptions in the Epigraphic Database Roma with a known provenance from the area, thus restoring agency to the archaeological landscape. To this end, a new webGIS is being developed that allows for the topographical visualisation of all relevant data.

35.2
2024



ARCHEOLOGIA E CALCOLATORI

35.2

2024

€ 60,00

ISSN 1120-6861

e-ISSN 2385-1953

ISBN 978-88-9285-298-3

e-ISSN 978-88-9285-299-0



AC35-2

9 788892 852983

ARCHEOLOGIA
E CALCOLATORI

All'Insegna del Giglio