

Il santuario di Apollo *Pythios* ad Atene  
Formazione, sviluppo e paesaggi di un luogo di culto ai confini sud-  
orientali della *Polis*

*Atlante*

2641200

2641300

2641400

2641500

2641600

2641700

2641800

2641900

2642000

2642100

2642200

2642300

4575400

4575300

4575200

4575100

4575000

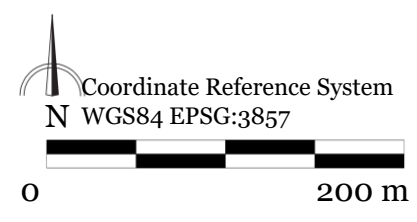
4574900

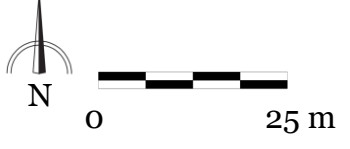
4574800

4574700

4574600

4574500

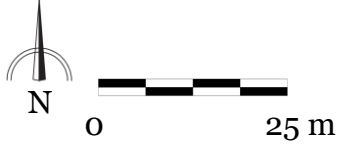




2641600

2641700

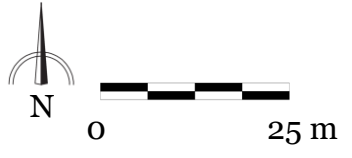
2641800



2641600

2641700

2641800



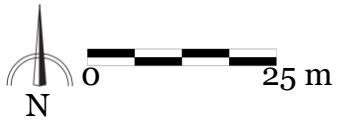
2641600

2641700

2641800

4575100

4575000



2641600

2641700

2641800

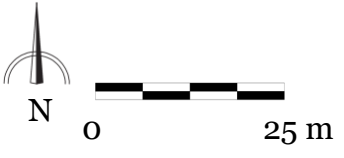
4574900



2641600

2641700

4574800



2641500

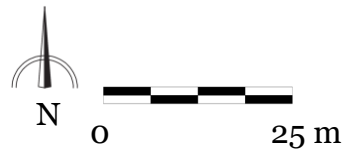
2641600

2641700

4574700



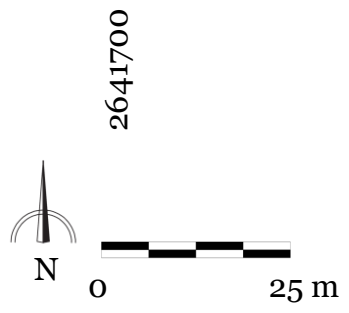
2641700



2641800

2641900

4575200



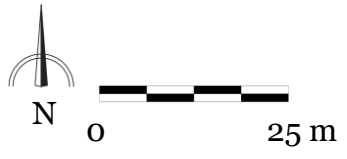
2641700

2641800

2641900

4575100

4575000



2641800

2641900

2642000

4575000

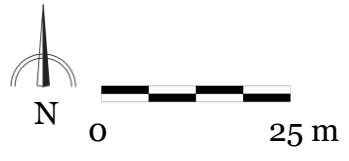
4574900



2641800

2641900

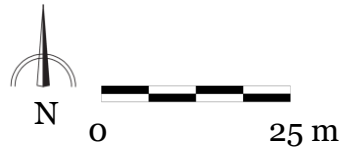
4574900



2641800

2641900

4574700

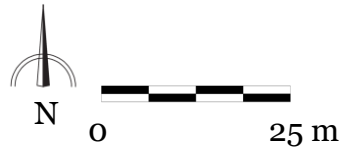


2641800

2641900

4574600

4574500



2641900

2642000

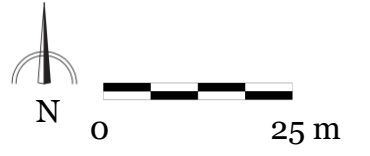
2642100

4575200

2642000

2642100

2642200



4575000



2642000

2642100



4574900

2642200

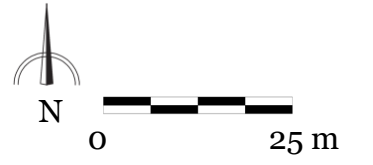
2642300



4574900

2642200

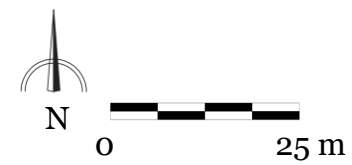
2642300



4574800

2642100

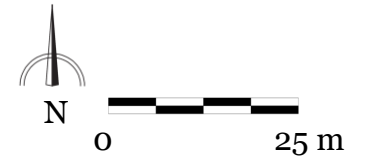
2642200



4574700

2642200

2642300



4574700

4574600